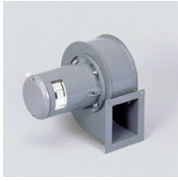




CMB/CMT

5130104200 - CMT/2-160/060 0,37KW (230/400V50HZ)LG270 VE



Single inlet centrifugal fan direct driven for the continuous extraction of air stream up to 110°C. Forward curved centrifugal impeller, manufactured from galvanised sheet steel painted with epoxy polyester. Three phase motor. Brand S&P model CMT/2-160/060 0,37KW (230/400V50HZ)LG270 VE .

Theoretical Working Point

Airflow	-
Static Pressure	0,000 Pa
Temperature	20 °C
Altitude	0 m
Density	1,2 kg/m ³
Frequency	50 Hz

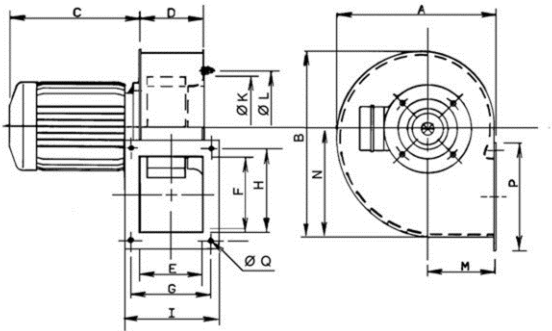
Construction

Fan size	160/60
Weight	9,50 kg

Motor Characteristics

Number of poles	2
Motor Power	0,37kW
Voltage	3-230/400V-50Hz
Maximum absorbed current	1,1 A / 0,6 A
IP Rating	IP55
Motor insulation class	F

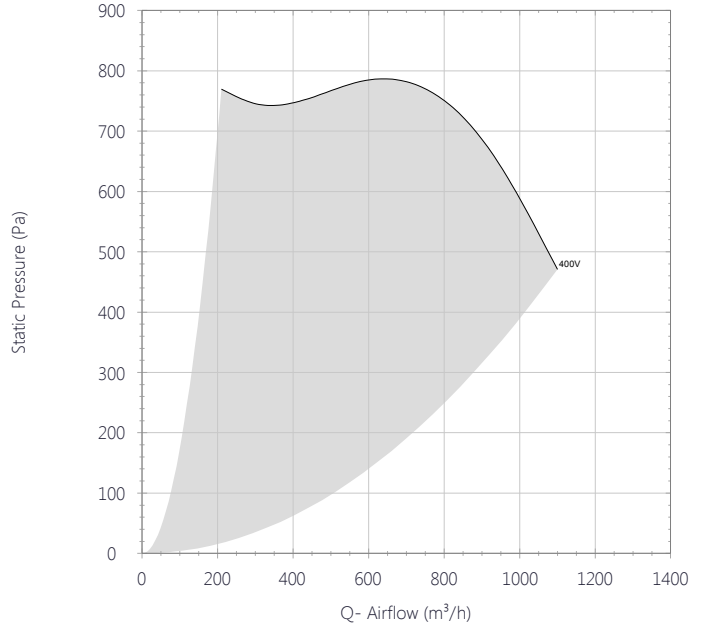
Drawing



A	B	C	D	E	F	G	H	I
254	293	207	102.5	100	120	128	148	153

K	L	M	N	P	Q
166	180	109	171	172	7.5

Performance Chart



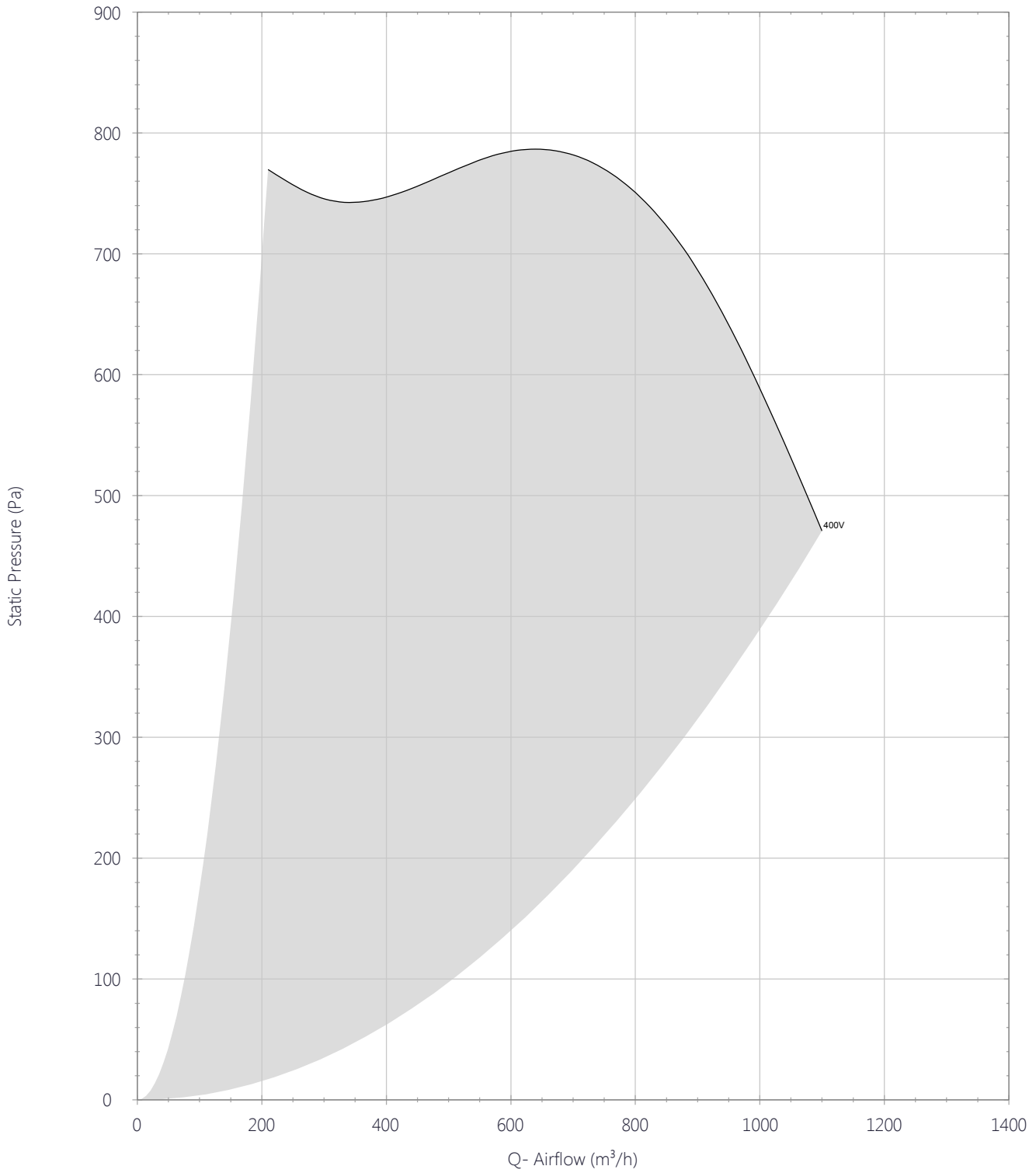
Sound Performance

	63	125	250	500	1k	2k	4k	8k	Overall
Inlet (LwA)	48	60	71	74	76	80	75	73	84
Inlet LpA @ 1m	37	49	60	63	65	69	64	62	73
Outlet (LwA)	48	60	71	74	76	80	75	73	84
Outlet LpA @ 1m	37	49	60	63	65	69	64	62	73





Performance Chart

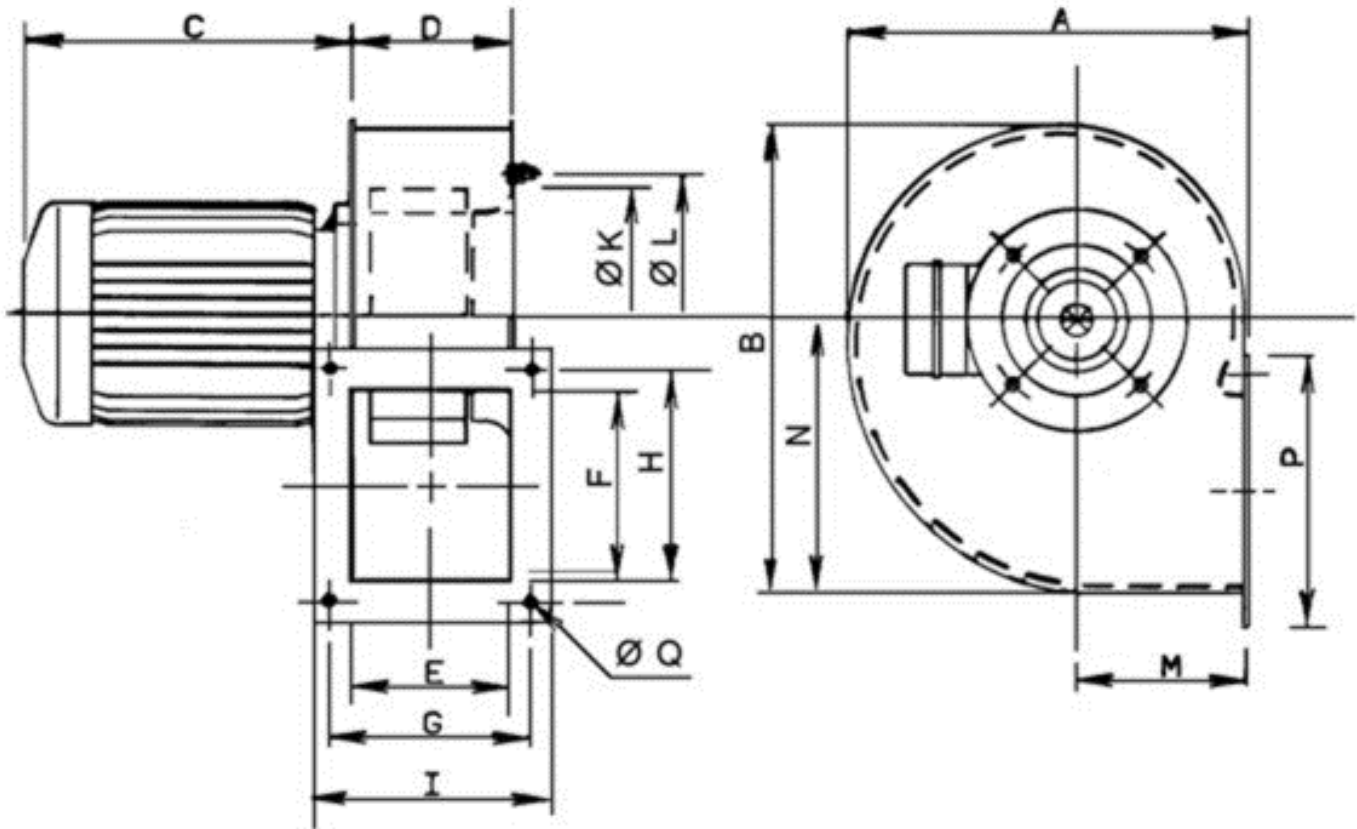




CMB/CMT

5130104200 - CMT/2-160/060 0,37KW (230/400V50HZ)LG270 VE

Drawing



A	B	C	D	E	F	G	H	I	K	L	M	N	P	Q
254	293	207	102.5	100	120	128	148	153	166	180	109	171	172	7.5



CMB/CMT

5130104200 - CMT/2-160/060 0,37KW (230/400V50HZ)LG270 VE

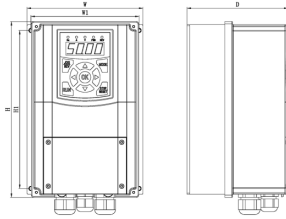
Accessories

L1000000662 - S&P UK DIGITAL INVERTER VFD-M 1PH>3PH 2.2KW 230V (10A MAX)

Single-phase 230V-50/60Hz Voltage supply. Motor kW protection programmable by a single parameter. Power on and drive status indication. Speed selection with UP/DOWN keys. Run/Fault relay output contacts. Motor overload and shortcut protections.



Dimensions



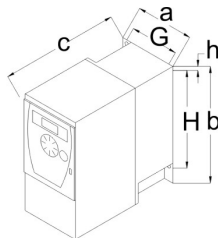
H	H1	W	W1	D	d
193	170	150	140	131	4.5

5401611900 - VFTM MONO 0,18 Modelo ATV312

Adjustable frequency drive IP55. Single phase supply (230V 50/60Hz), three phase 230V output .



Dimensions



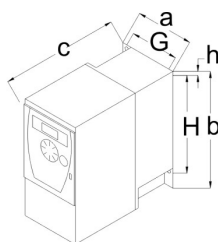
a	b	c	G	H
72	145	132	60	121.5

5401612000 - VFTM MONO 0,37

Adjustable frequency drive IP55. Single phase supply (230V 50/60Hz), three phase 230V output .



Dimensions



a	b	c	G	H
72	145	132	60	121.5



CMB/CMT

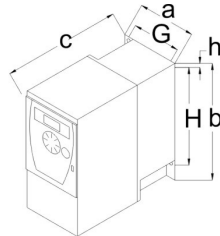
5130104200 - CMT/2-160/060 0,37KW (230/400V50HZ)LG270 VE

5401618200 - VFTM MONO 0,18 IP55

Adjustable frequency drive. Single phase supply (230V 50/60Hz), three phase 230V output .



Dimensions



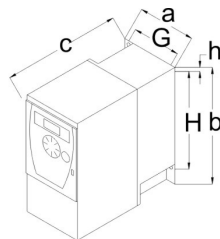
a	b	c	G	H	I
210	240	163	192	218	5.5

5401618300 - VFTM MONO 0,37 IP55

Adjustable frequency drive. Single phase supply (230V 50/60Hz), three phase 230V output .



Dimensions



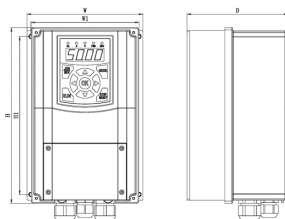
a	b	c	G	H	I
210	240	163	192	218	5.5

L1000000664 - S&P UK DIGITAL INVERTER VFD-T 3PH>3PH 2.2KW 400V (5A MAX)

Three-phase 400V-50/60Hz Voltage supply. Motor kW protection programmable by a single parameter. Power on and drive status indication. Speed selection with UP/DOWN keys. Run/Fault relay output contacts. Motor overload and shortcut protections.



Dimensions



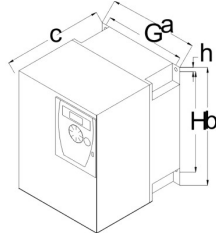
H	H1	W	W1	D	d
193	170	150	140	131	4.5

5401612600 - VFTM TRI 0,37

Adjustable frequency drive. Three phase supply (400V 50/60Hz), three phase 400V output.



Dimensions



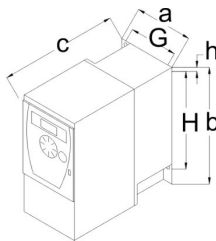
a	b	c	G	h	H	I	nM4
107	143	152	93	5	121.5	5	2

5401618900 - VFTM TRI 0,37 IP55

Adjustable frequency drive IP55. Three phase supply (400V 50/60Hz), three phase 400V output.



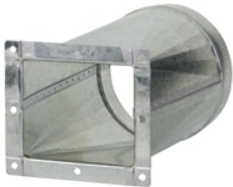
Dimensions



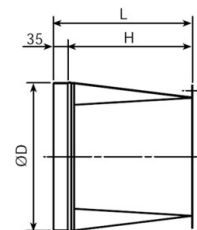
a	b	c	G	H	I
215	297	192	197	277	5.5

5130304800 - KMBI-160

connector rectangular/circular to install on the discharge of CMT.



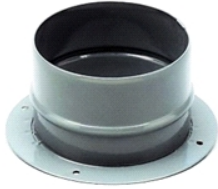
Dimensions



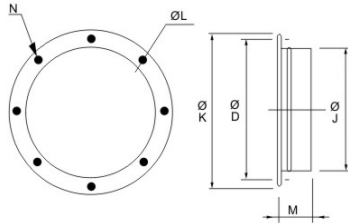
L	H	D
235	200	160

5130802100 - KBA-160

INLET FLANGE



Dimensions



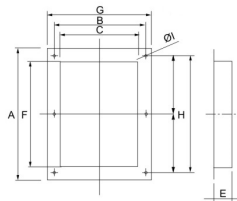
I	D	K	J	L	M	N
7	180	205	160	7	65	4

5130816100 - KBD-160

DISCHARGE FLANGE



Dimensions



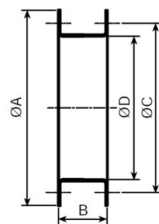
A	B	C	D	E	F	G	H
172	128	103	160	40	122	153	148

5130307300 - KMBD-160

Flange for mounting at the CMT fan inlet.



Dimensions



A	B	C	D
205	80	180	160



CMB/CMT

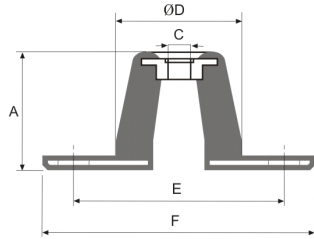
5130104200 - CMT/2-160/060 0,37KW (230/400V50HZ)LG270 VE

5130861700 - KSE-45

Rubber anti-vibration mounts that absorb vibration and attenuate the noise produced in the installation. (1 KSE = 4 supports in a bag)



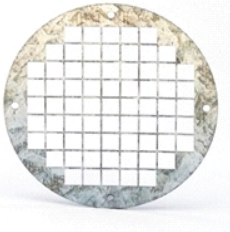
Dimensions



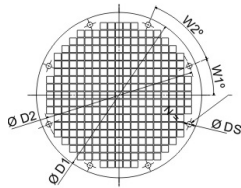
A	C	D	E	F
24	8	30	65	90

5130868200 - KRJ-160

INLET WIRE PROTECTION GUARD



Dimensions



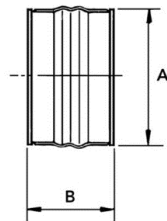
D1	D2	DS	N	W2
200	180	7	8	45

5138920300 - ACOPEL F400-160/160 N

FLEXIBLE CONNECTOR



Dimensions



A	B
163	160



CMB/CMT

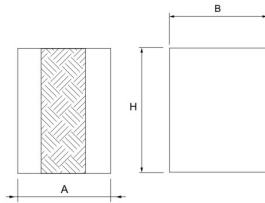
5130104200 - CMT/2-160/060 0,37KW (230/400V50HZ)LG270 VE

5130848400 - KAD-160

RECTANGULAR FLEXIBLE CONNECTOR



Dimensions



A	H	B
165	123	104



CMB/CMT

5130104200 - CMT/2-160/060 0,37KW (230/400V50HZ)LG270 VE

Sound Performance

	63	125	250	500	1k	2k	4k	8k	Overall
Inlet (LwA)	48	60	71	74	76	80	75	73	84
Inlet LpA @ 1m	37	49	60	63	65	69	64	62	73
Outlet (LwA)	48	60	71	74	76	80	75	73	84
Outlet LpA @ 1m	37	49	60	63	65	69	64	62	73

