



Low profile fans manufactured from galvanised steel sheet and lined with 7mm thickness melamine foam acoustic insulation (M1). Supplied with a removable cover closing hermetically. All models incorporate single phase direct-drive forward curved centrifugal fan and IP55 remote terminal box. Available, depending upon the model, with single phase motors in 2 or 4 poles.

**Motors**

External rotor motors, IP44, class B, with ball bearings and thermal protection.

Electrical supply:

Single phase 230V-50Hz.

Working temperature from -20°C to +40°C.

**On request**

Versions protected against corrosion by epoxy paint coating.



**Low noise level**

Acoustic insulation of 7 mm thickness (M1) melamine foam reducing the noise level significantly.



**Cabinet air tightness**

All models incorporate inlet and discharge circular duct connection flanges with integrated rubber air seal.



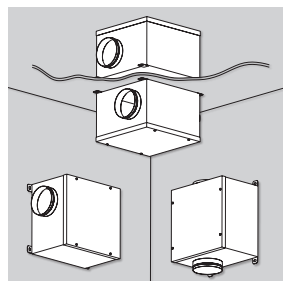
**Easy to mount**

All models are supplied with four mounting feet to facilitate any ceiling, wall or floor mounting installation.



**IP55 remote terminal box**

To ease installation and connection to external controls.



**Installation at any position**

Can be mounted in vertical, horizontal or inverted position.

### TECHNICAL CHARACTERISTICS

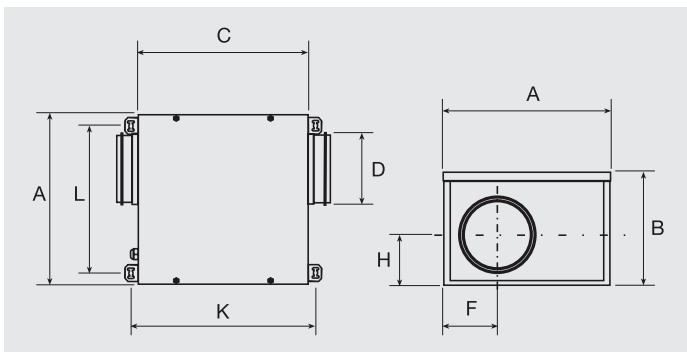
Before installation check that the product electrical characteristics listed on the data plate label (voltage, power, frequency, etc) match those of the intended electrical supply.

Model	Speed (RPM)	Maximum absorbed power (W)	Maximum absorbed current (A)	Maximum airflow (m³/h)	Sound pressure level** (dB(A))			Min-Max air temperature (°C)	Weight (kg)	Speed controller		Wiring diagram (n°)
					Inlet	Outlet	Radiated*			REB	RMB	
CVB-350/125	1700	92	0,4	330	46	54	41	-20/+40	6,2	REB-1N	RMB-1,5	22
CVB-600/150-160	2310	257	1,12	680	53	65	46	-20/+40	7,3	REB-2,5N	RMB-1,5	22
CVB-900/200	1100	175	0,75	840	48	57	41	-20/+40	11	REB-1N	RMB-1,5	22
CVB-1100/250	1720	392	1,69	1290	52	60	47	-20/+40	11	REB-2,5N	RMB-3,5	22

\* Fan ducted on both inlet and outlet sides.

\*\* Sound pressure levels measured at 1,5m in free field condition at a medium working point of the performance curve

### DIMENSIONS (mm)

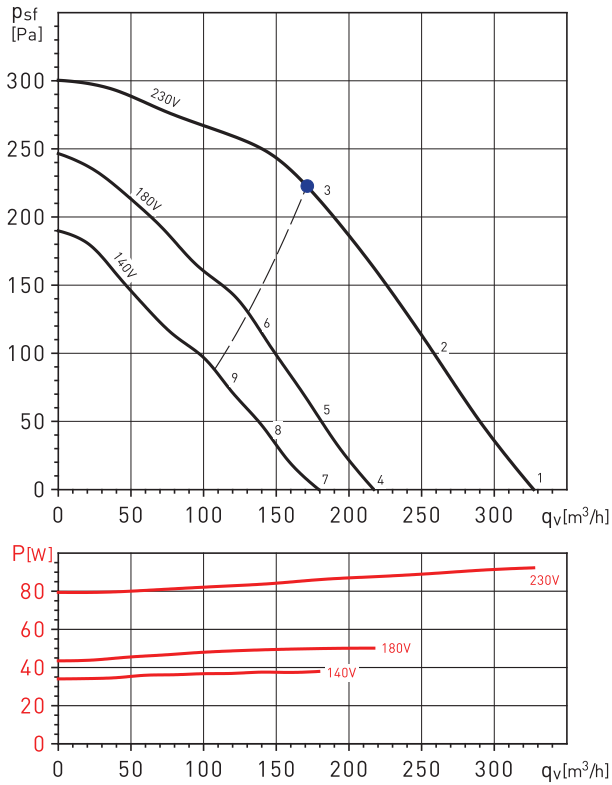


Model	A	B	C	Ø D	F	H	L	K
CVB-350/125	308,5	213	315,5	125	97	93,7	271,6	340
CVB-600/150-160	308,5	213	315,5	150/160	97	93,7	271,6	340
CVB-900/200	431,1	246,5	421,1	200	118	117,7	394,2	445,5
CVB-1100/250	445,5	305	343,5	250	221,5	163,2	408,6	368

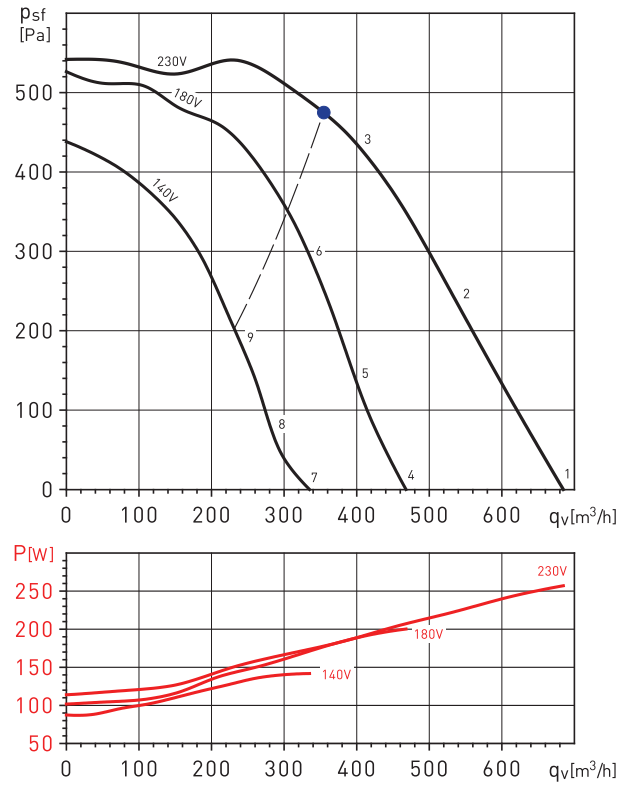
**PERFORMANCE CURVES**

- $q_v$ : Airflow in  $m^3/h$ .
- $p_{sf}$ : Static pressure in Pa.
- Dry air at 20°C and 760 mmHg.
- Performance data in accordance with ISO 5801 and AMCA 210-99 Standards.
- Sound power levels (LwA dB(A)).

CVB-350/125



CVB-600/150-160



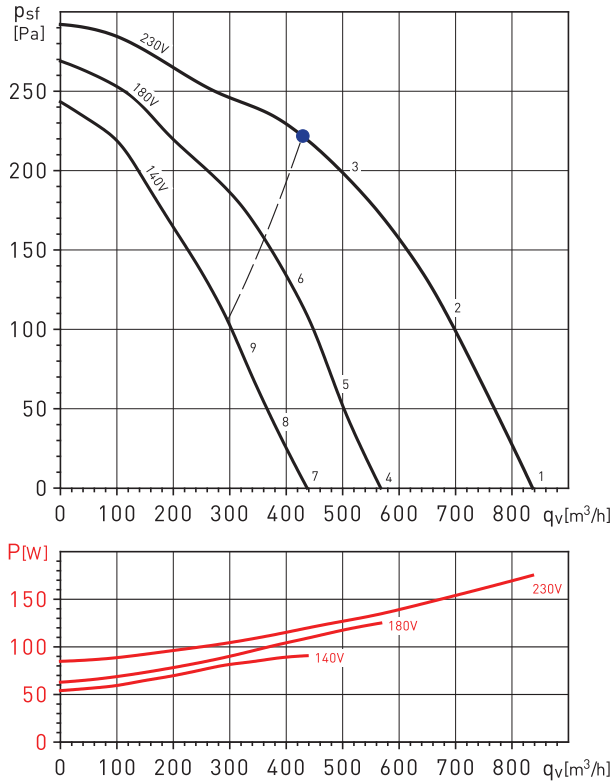
Working point		63	125	250	500	1000	2000	4000	8000	LwA
1	Inlet	41	57	52	56	52	45	41	36	61
	Outlet	39	60	57	59	65	64	61	59	70
	Break-out	41	54	49	46	42	38	31	26	56
2	Inlet	40	56	51	55	52	45	41	37	60
	Outlet	35	58	57	58	63	63	59	57	68
	Break-out	40	53	48	45	42	38	31	27	55
3	Inlet	41	56	50	54	53	46	40	36	60
	Outlet	34	57	55	57	63	63	59	57	68
	Break-out	41	53	47	44	43	39	30	26	55
4	Inlet	31	47	42	46	42	35	31	26	51
	Outlet	29	50	47	49	55	54	51	49	60
	Break-out	31	44	39	36	32	28	21	16	46
5	Inlet	31	47	42	46	43	36	32	28	51
	Outlet	26	49	48	49	54	54	50	48	59
	Break-out	31	44	39	36	33	29	22	18	46
6	Inlet	34	49	43	47	46	39	33	29	53
	Outlet	27	50	48	50	56	56	52	50	61
	Break-out	34	46	40	37	36	32	23	19	48
7	Inlet	27	43	38	42	38	31	27	22	47
	Outlet	25	46	43	45	51	50	47	45	56
	Break-out	27	40	35	32	28	24	17	12	42
8	Inlet	27	43	38	42	39	32	28	24	47
	Outlet	22	45	44	45	50	50	46	44	55
	Break-out	27	40	35	32	29	25	18	14	42
9	Inlet	30	45	39	43	42	35	29	25	49
	Outlet	23	46	44	46	52	52	48	46	57
	Break-out	30	42	36	33	32	28	19	15	44

Working point		63	125	250	500	1000	2000	4000	8000	LwA
1	Inlet	46	63	62	66	61	56	53	51	70
	Outlet	43	65	67	70	77	76	71	69	81
	Break-out	46	61	57	55	51	47	40	36	64
2	Inlet	45	60	57	64	60	56	51	49	68
	Outlet	42	62	63	68	75	75	69	67	79
	Break-out	45	58	52	53	50	47	38	34	61
3	Inlet	44	59	56	63	60	56	50	48	67
	Outlet	41	60	61	66	74	75	68	66	79
	Break-out	44	57	51	52	50	47	37	33	60
4	Inlet	39	56	55	59	54	49	46	44	63
	Outlet	36	58	60	63	70	69	64	62	74
	Break-out	39	54	50	48	44	40	33	29	57
5	Inlet	39	54	51	58	54	50	45	43	62
	Outlet	36	56	57	62	69	69	63	61	74
	Break-out	39	52	46	47	44	41	32	28	55
6	Inlet	41	56	53	60	57	53	47	45	63
	Outlet	38	57	58	63	71	72	65	63	75
	Break-out	41	54	48	49	47	44	34	30	56
7	Inlet	32	49	48	52	47	42	39	37	56
	Outlet	29	51	53	56	63	62	57	55	67
	Break-out	32	47	43	41	37	33	26	22	50
8	Inlet	32	47	44	51	47	43	38	36	54
	Outlet	29	49	50	55	62	62	56	54	66
	Break-out	32	45	39	40	37	34	25	21	48
9	Inlet	35	50	47	54	51	47	41	39	57
	Outlet	32	51	52	57	65	66	59	57	69
	Break-out	35	48	42	43	41	38	28	24	50

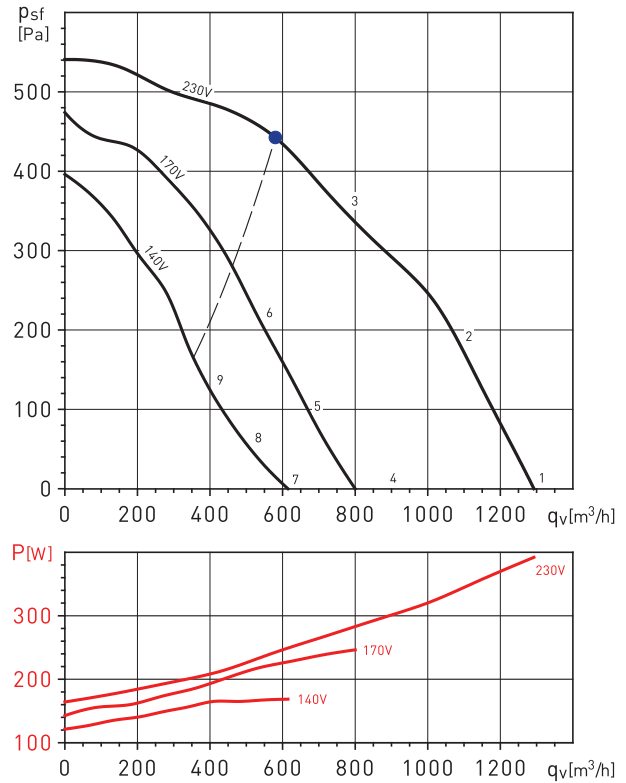
PERFORMANCE CURVES

- $q_v$ : Airflow in  $m^3/h$ .
- $p_{sf}$ : Static pressure in Pa.
- Dry air at 20°C and 760 mmHg.
- Performance data in accordance with ISO 5801 and AMCA 210-99 Standards.
- Sound power levels (LwA dB(A)).

CVB-900/200



CVB-1100/250



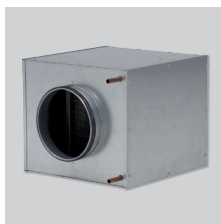
Working point	63	125	250	500	1000	2000	4000	8000	LwA
1	Inlet	46	54	60	62	57	50	47	65
	Outlet	52	57	60	68	68	65	63	73
	Break-out	45	54	52	52	49	41	36	58
2	Inlet	42	52	55	59	56	48	45	63
	Outlet	44	54	56	65	68	63	61	71
	Break-out	41	52	47	49	48	39	34	56
3	Inlet	41	53	51	56	54	47	43	60
	Outlet	37	53	52	62	66	62	59	69
	Break-out	40	53	43	46	46	38	32	55
4	Inlet	38	46	52	54	49	42	39	58
	Outlet	44	49	52	60	60	57	55	65
	Break-out	37	46	44	44	41	33	28	51
5	Inlet	36	46	49	53	50	42	39	56
	Outlet	37	47	49	58	61	56	54	65
	Break-out	35	46	41	43	42	33	28	49
6	Inlet	36	48	46	51	49	42	38	56
	Outlet	32	48	47	57	61	57	54	65
	Break-out	35	48	38	41	41	33	27	50
7	Inlet	32	40	46	48	43	36	33	52
	Outlet	38	43	46	54	54	51	49	59
	Break-out	31	40	38	38	35	27	22	45
8	Inlet	30	40	43	47	44	36	33	51
	Outlet	32	42	44	53	56	51	49	59
	Break-out	29	40	35	37	36	27	22	44
9	Inlet	31	43	41	46	44	37	33	51
	Outlet	27	43	42	52	56	52	49	60
	Break-out	30	43	33	36	36	28	22	45

Working point	63	125	250	500	1000	2000	4000	8000	LwA
1	Inlet	46	58	56	59	54	49	50	64
	Outlet	51	60	59	63	68	68	65	73
	Break-out	46	58	50	48	39	39	38	59
2	Inlet	48	60	59	62	60	51	49	67
	Outlet	41	61	61	66	69	70	66	75
	Break-out	48	60	53	51	45	41	37	62
3	Inlet	48	62	61	65	63	54	51	69
	Outlet	42	63	63	69	71	71	67	76
	Break-out	48	62	55	54	48	44	39	64
4	Inlet	37	49	47	50	45	40	41	55
	Outlet	42	51	50	54	59	59	56	64
	Break-out	37	49	41	39	30	30	29	51
5	Inlet	41	53	52	55	53	44	42	59
	Outlet	34	54	54	59	62	63	59	67
	Break-out	41	53	46	44	38	34	30	54
6	Inlet	43	57	56	60	58	49	46	64
	Outlet	38	59	59	65	67	67	63	72
	Break-out	43	57	50	49	43	39	34	59
7	Inlet	32	44	42	45	40	35	36	50
	Outlet	37	46	45	49	54	54	51	59
	Break-out	32	44	36	34	25	25	24	46
8	Inlet	34	46	45	48	46	37	35	53
	Outlet	27	47	47	52	55	56	52	61
	Break-out	34	46	39	37	31	27	23	48
9	Inlet	37	51	50	54	52	43	40	58
	Outlet	31	52	52	58	60	60	56	66
	Break-out	37	51	44	43	37	33	28	52

**MOUNTING ACCESSORIES**



**MBE**  
Electric heater.



**MBW**  
Hot water coil.



**MFL-G4**  
Filtration boxes.



**SIL**  
Sound attenuators.



**ACOPEL F400 N**  
Circular flexible connector.



**APC**  
Discharge protection guards for direct connection to the inlet-outlet flange (please see pages. Mounting Accessories)



**KSE-45**  
Flexible supports Rubber anti-vibration mounts to reduce vibration and noise transmission to the installation. (1KSE = set of 4 supports per bag)



**GSA**  
Flexible aluminium ducting.



**GSI**  
Flexible aluminium acoustic ducting.



**CX**  
Worm drive duct clip.



**BOC**  
Interior air valve.



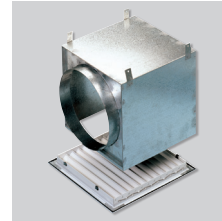
**GCI**  
Interior circular grille.



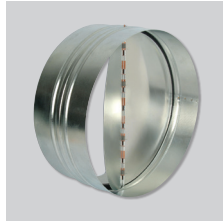
**VR**  
Mounting accessory for GCI.



**GRI**  
Interior square grille.



**RP**  
Terminal connector for GRI.



**CAR**  
Circular back draft shutter.

**ELECTRICAL ACCESSORIES**



**REB**  
Electronic speed controllers.



**RMB**  
Auto-transformer speed controller.



**ON/OFF IP55 SWITCH**



**PULSER**  
Electric heater controller.



**TG-K330**  
Duct temperature sensor.  
**TG-R530**  
Room temperature sensor.