



JETLINE

5145896000 - JETLINE-200 (220/240V50/60HZ) N8 N8 - IN LINE DUCT FANS



In-line fan for circular duct with low profile compact casing manufactured from galvanised sheet steel and rubber gasket on the flanges. High performance impeller, guide vane and outlet diffuser manufactured from injection-moulded plastic, to increase performances and lower the sound level. IP55 terminal box fixed on the casing.

Mounting bracket supplied with the fan, enabling to mount the fan in two different positions and any shaft orientation

Motor

Single-phase external rotor motor assembled with antivibration mount to reduce vibration and noise level, 220-240V50/60Hz, IP44, class F, with thermal protection and speed regulable by tension.

Working temperature -20/60°C

Model JETLINE-200 (220/240V50/60HZ) N8 N8.

Theoretical Working Point

Airflow	-
Static Pressure	0,000 Pa
Temperature	20 °C
Altitude	0 m
Density	1,2 kg/m ³
Frequency	50 Hz

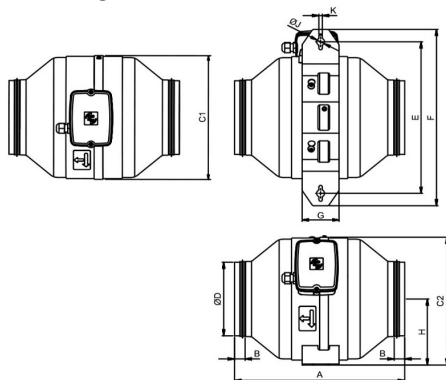
Construction

Discharge diameter	200 mm
Fan size	200

Motor Characteristics

Number of poles	2
Voltage	1-230V-50Hz
Maximum absorbed current	0,5 A
IP Rating	IP44
Motor insulation class	F

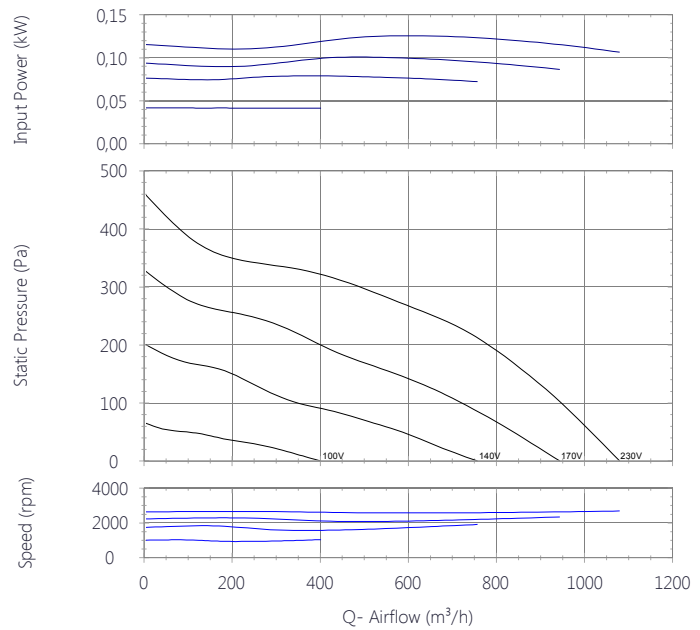
Drawing



A	B	C1	C2	øD	E	F	G	H
322	30	273	281	195	320	370	100	140

øJ	K
15	6.5

Performance Chart



Sound Performance

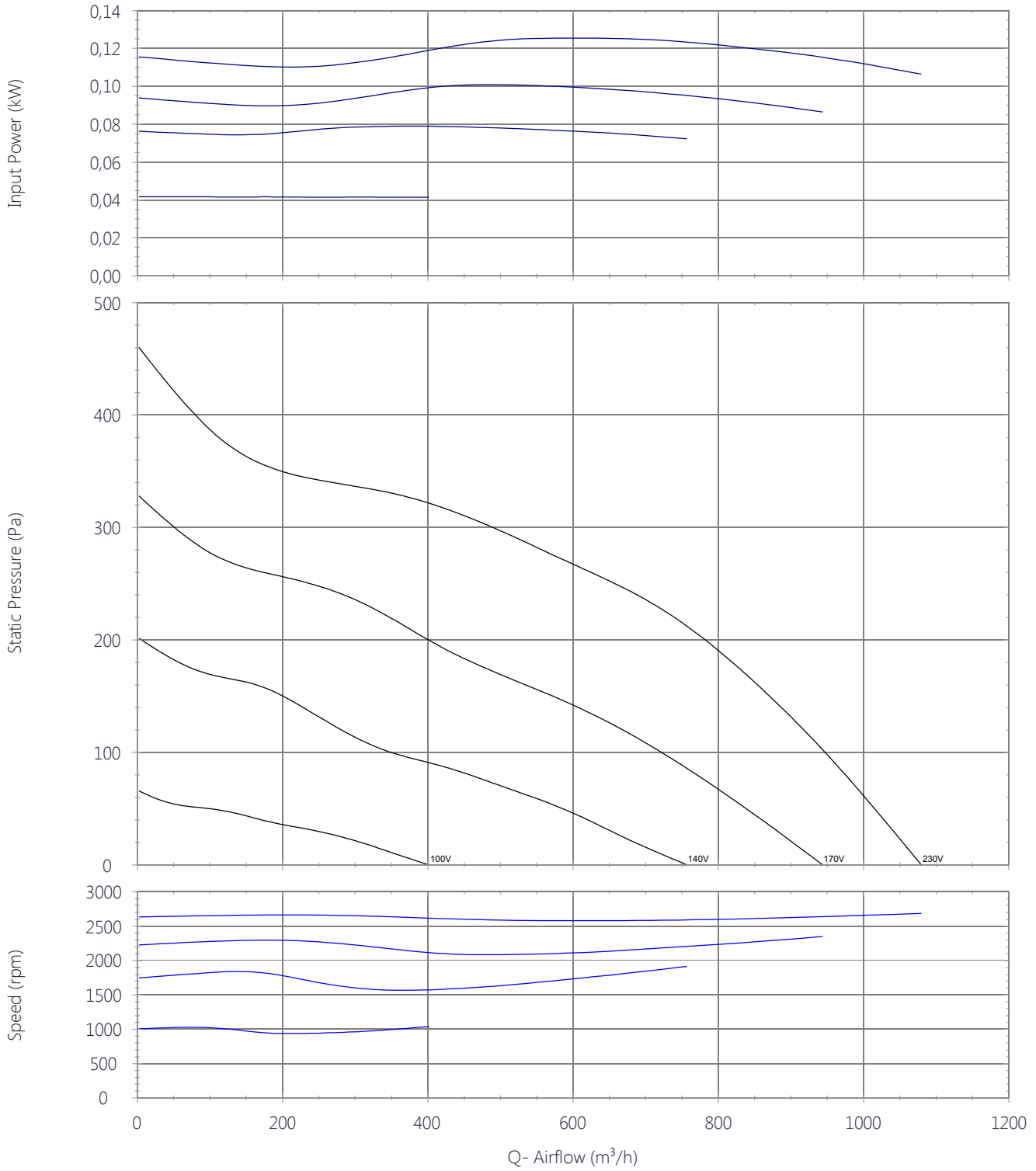
	63	125	250	500	1k	2k	4k	8k	Overall
Inlet (LwA)	29	44	60	65	65	64	65	60	72
Inlet LpA @ 1m	18	33	49	54	54	53	54	49	61
Outlet (LwA)	28	45	61	65	64	63	62	56	71
Outlet LpA @ 1m	17	34	50	54	53	52	51	45	60
Breakout (LwA)	18	36	48	50	50	46	48	42	56
Breakout LpA @ 1m	7	25	37	39	39	35	38	31	45



Q=1



Performance Chart

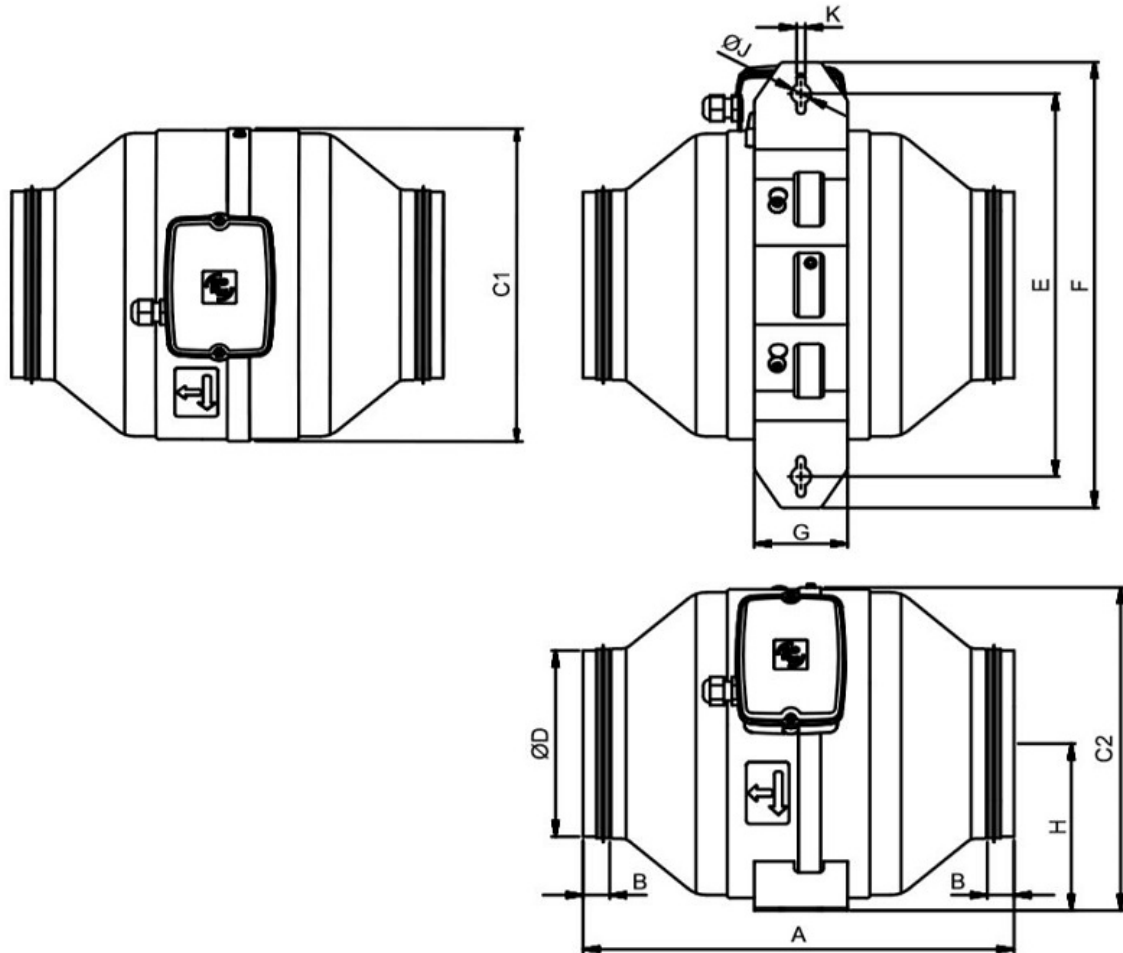




JETLINE

5145896000 - JETLINE-200 (220/240V50/60HZ) N8 N8 - IN LINE DUCT FANS

Drawing



A	B	C1	C2	ØD	E	F	G	H	øJ	K
322	30	273	281	195	320	370	100	140	15	6.5

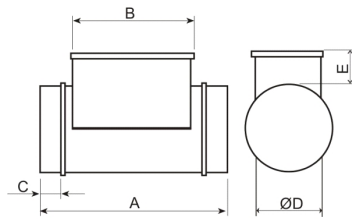
Accessories

5211808900 - MBE-200/20T 2/400V



Electric Heater Battery

Dimensions



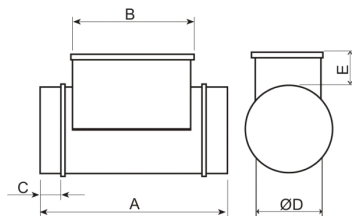
A	B	C	D	E
375	278	42	200	105

5211803100 - MBE-200/50T



Electric Heater Battery

Dimensions



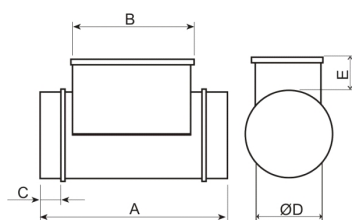
A	B	C	D	E
400	285	50	200	105

5211782000 - MBE-200/20T-R 2/400V



Electric Heater Battery

Dimensions



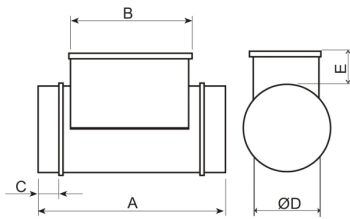
A	B	C	D	E
400	285	50	200	105

5211808800 - MBE-200/21B 1/230V



Electric Heater Battery

Dimensions



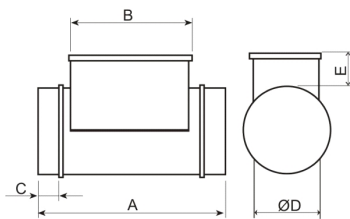
A	B	C	D	E
400	285	50	200	105

5211809000 - MBE-200/30T 2/400V



Electric Heater Battery

Dimensions



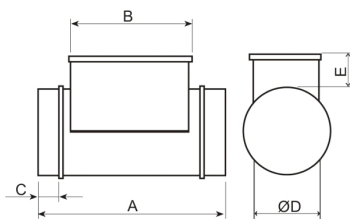
A	B	C	D	E
400	285	50	200	105

5211782100 - MBE-200/30T-R 2/400V



Electric Heater Battery

Dimensions



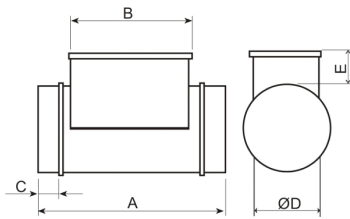
A	B	C	D	E
400	285	50	200	105

5211809100 - MBE-200/40T 2/400V



Electric Heater Battery

Dimensions



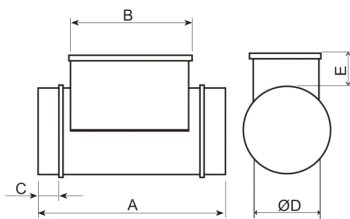
A	B	C	D	E
400	285	50	200	105

5211782200 - MBE-200/40T-R 2/400V



Electric Heater Battery

Dimensions



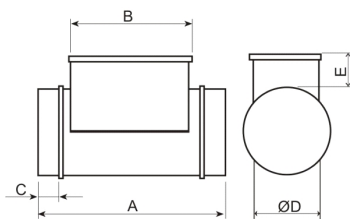
A	B	C	D	E
400	285	50	200	105

5211782300 - MBE-200/50T-R 2/400V



Electric Heater Battery

Dimensions



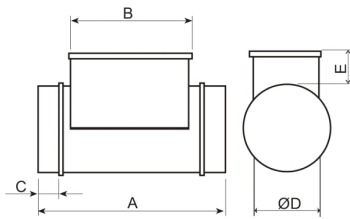
A	B	C	D	E
400	285	50	200	105

5211809200 - MBE-200/60T 2/400V



Electric Heater Battery

Dimensions



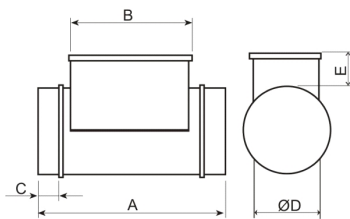
A	B	C	D	E
400	285	50	200	105

5211782400 - MBE-200/60T-R 2/400V



Electric Heater Battery

Dimensions



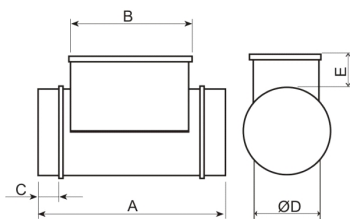
A	B	C	D	E
400	285	50	200	105

5211809300 - MBE-200/90T 3/400V



Electric Heater Battery

Dimensions



A	B	C	D	E
400	285	50	200	105

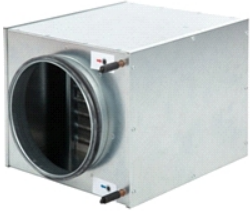


JETLINE

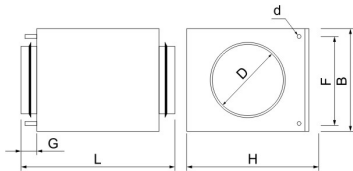
5145896000 - JETLINE-200 (220/240V50/60HZ) N8 N8 - IN LINE DUCT FANS

5132864300 - MBW-200

Hot-water coil



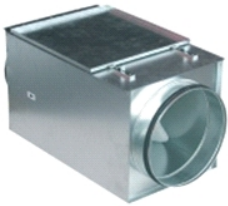
Dimensions



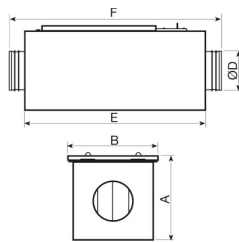
B	D	H	J	K	L	R
258	200	305	40	215	380	10

5416745000 - MFL-200 F

Box in galvanized steel for inserting the MFR F5, F6 and F7 filters. Fitted with inlet and discharge circular duct connection flanges with integrated rubber air seal and an inspection cover easy to open for maintaining the filters.



Dimensions



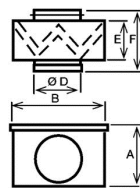
A	B	D	E	F
258	265	200	450	530

5416579000 - MFL-200 G4

MFL filtration boxes are of G4 grade filtration and are designed for direct connection with standard circular ducting. The MFL-G4 filtration boxes are supplied with a cover easily removable to replace the filter.



Dimensions



A	B	D	E	F
246	269	200	154	218



JETLINE

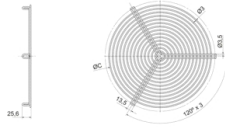
5145896000 - JETLINE-200 (220/240V50/60HZ) N8 N8 - IN LINE DUCT FANS

5145803200 - DEF-VENT-200



OUTLET WIRE PROTECTION GUARD

Dimensions



NW

200

5211811400 - SIL-200

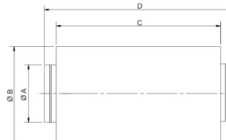
Silencer to be installed either at the inlet or outlet of the fan.



Corrections

63	125	250	500	1k	2k	4k	8k
-1	-3	-7	-14	-20	-26	-15	-7

Dimensions



A	B	C	D
200	300	600	700

5145822200 - ACOP-VENT-200 (V977505)



FLEXIBLE CONNECTOR



JETLINE

5145896000 - JETLINE-200 (220/240V50/60HZ) N8 N8 - IN LINE DUCT FANS

Sound Performance

	63	125	250	500	1k	2k	4k	8k	Overall
Inlet (LwA)	29	44	60	65	65	64	65	60	72
Inlet LpA @ 1m	18	33	49	54	54	53	54	49	61
Outlet (LwA)	28	45	61	65	64	63	62	56	71
Outlet LpA @ 1m	17	34	50	54	53	52	51	45	60
Breakout (LwA)	18	36	48	50	50	46	48	42	56
Breakout LpA @ 1m	7	25	37	39	39	35	38	31	45



Q=1



ErP Data

Ecodesign	
Commission regulation (EU) N°1253/2014 of July 2014	
Information requirements (Annex V)	
Product description	JETLINE-200 (220/240V50/60HZ) N8 N8
Manufacturer's Info	S&P ES-08150 CIF-B64911928
Identifier	-
Typology	NRVU unidirectional
Drive	VSD
Type of HRC	None
Thermal efficiency (%)	0
Qnom (m3/s)	0,19
Pelec (kW)	0,12
SFPint (W/m3/s)	NA
Face velocity (m/s)	3,8
$\Delta p_{s,ext}$ (Pa)	236,67
$\Delta p_{s,int}$ (Pa)	NA
$\Delta p_{s,add}$ (Pa)	NA
Static efficiency fans (%)	36,8
External leakage rate (%)	0,7
Internal leakage rate (%)	NA
Filter performance	NA
Filter warning	NA
LWA dB(A)	57
https://www.solerpalau.com/	