

Chromium plated exhaust valves

KW-S-RM

[Download Wentyle](#)
[Download AlnorCAM](#)
[Buy via B2B](#)



Description

The KW-S-RM outlet valve is designed for mounting on ceilings, walls or directly on ducts with use of the special assembly frame RM. The KW-S-RM valve has a continuous adjustment of rotating central disc. Selected slot can be fixed by means of a fixing nut. Special construction of the valve ensures a low level of noise as well as easy and fast assembly.

Material: galvanized steel sheet
Finishing: chromium plated

Example identification

Product code: KW-S-RM - aaa

type _____
 Ød _____

Technical Data

Parameters

Volumetric flow q (l/s or m^3/h), total pressure loss P_t (Pa), and acoustic pressure level L_A (dB(A)), can be read from the figure.

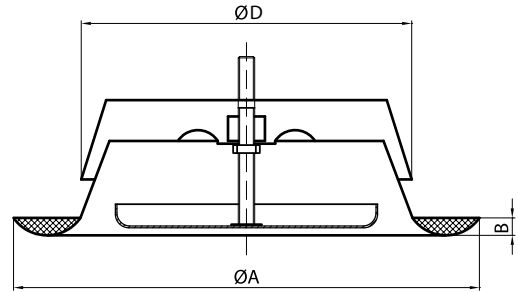
Pressure losses P_t

The figures show total pressure loss P_t (Pa).

Acoustic pressure level, L_A

The figure shows acoustic pressure level L_A (dB(A)). The noise level is specified for a room attenuation of 4dB, which translates into attenuation in the reverberation zone of the SABINE room with an acoustic absorption of $10 m^2$.

Dimensions



| $\varnothing D$ nom [mm] | $\varnothing A$ [mm] | B [mm] | weight [kg] |
|-----------------------------|-------------------------|-----------|----------------|
| 80 | 115 | 12 | 0,15 |
| 100 | 137 | 12 | 0,19 |
| 125 | 164 | 12 | 0,31 |
| 150 | 202 | 12 | 0,35 |
| 160 | 212 | 12 | 0,47 |
| 200 | 248 | 12 | 0,66 |

Acoustic pressure level, L_A (dB(A))

| dimension [mm] | average frequency (Hz) | | | | | | |
|-------------------|------------------------|-----|-----|------|------|------|------|
| | 125 | 250 | 500 | 1000 | 2000 | 4000 | 8000 |
| 80 | -2 | -6 | -5 | 1 | -1 | -5 | -14 |
| 100 | 4 | 3 | 2 | 0 | -7 | -15 | -30 |
| 125 | 2 | 7 | 3 | -2 | -10 | -20 | -32 |
| 150 | 3 | 7 | 3 | -2 | -10 | -20 | -32 |
| 160 | 5 | 7 | 3 | -2 | -10 | -19 | -32 |
| 200 | 8 | 6 | 4 | -3 | -10 | -19 | -32 |
| tolerance | 3 | 2 | 2 | 2 | 2 | 2 | 3 |

Sound attenuation (dB)

| dimension [mm] | average frequency (Hz) | | | | | | | |
|-------------------|------------------------|-----|-----|-----|------|------|------|------|
| | 63 | 125 | 250 | 500 | 1000 | 2000 | 4000 | 8000 |
| 80 | 26 | 18 | 14 | 10 | 8 | 8 | 6 | 9 |
| 100 | 22 | 16 | 11 | 8 | 6 | 6 | 3 | 6 |
| 125 | 20 | 15 | 9 | 6 | 4 | 3 | 3 | 5 |
| 150 | 19 | 15 | 9 | 6 | 4 | 3 | 4 | 5 |
| 160 | 18 | 13 | 8 | 5 | 4 | 4 | 5 | 6 |
| 200 | 17 | 11 | 7 | 6 | 6 | 5 | 6 | 6 |
| tolerance | 6 | 3 | 2 | 2 | 2 | 2 | 2 | 3 |

Technical Data

Selection charts

